

TRYAG FindBell

User Manual
and Safety Information



Works with

Apple Find My

Getting Started

Welcome to your new FindBell! This guide will help you pair the FindBell with your iPhone or iPad. Let's get started.

Quick Start

Step 1 - Remove the Pull Tab:

Pull out the plastic tab from the FindBell to activate its pre-installed battery.

Step 2 - Wait for Boot Sound :

Once powered, the FindBell will emit a boot sound, indicating that it is ready for pairing.

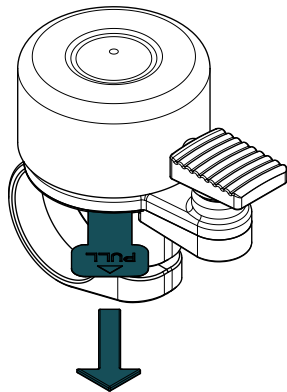
If no sound is emitted, ensure the pull tab has been completely removed.

Step 3 - Connect your FindBell to your iPhone

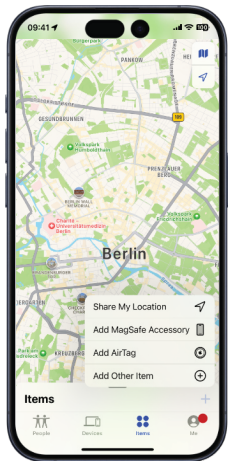
Follow the steps on the following pages to pair your FindBell with your iPhone or iPad, and follow on-screen instructions.

Step 4 - Install the FindBell on your Bike

Now you can install the FindBell to your 22.2 mm or 31.8 mm handlebar, depending on the purchased version.



Add FindBell to Find My App



Step 1 - Check for Updates

Ensure your iPhone or iPad is updated to the latest version of iOS or iPadOS to ensure compatibility and the best performance.

Step 2 - Open Find My App:

Open the Find My app on your compatible iPhone or iPad. (For the manual in your preferred language and the app name in your device's language, scan the QR code on the back of the manual.)

Step 3 - Locate Items Tab and search for the FindBell:

Select "Items" tab in the Find My app.

Variation 1: If you already have accessories compatible with the Apple Find My Network linked to your account, press the plus symbol. Now select "Add Other Item".

Variation 2: If the FindBell is your first Apple Find My Network compatible accessory, expand the view by sliding up the panel and click "Add Item". Once you get asked, select "Other Supported Item".

Step 5 - Wait for Discovery:

Wait until your FindBell has been found. Make sure your FindBell is close to your device.

If your device can't discover the FindBell as **more the 3 minutes elapsed** since the initial power-up, restart the FindBell by removing and reinserting the battery. (see page 9)

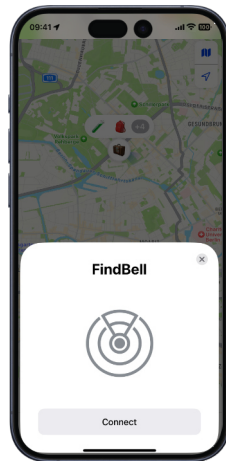


Step 6 - Name your FindBell:


Wait for "FindBell" to appear in the pop-up, then tap "Connect". Follow the on-screen prompts to name your FindBell and select an emoji for it. Confirm by tapping "Continue" after each step.

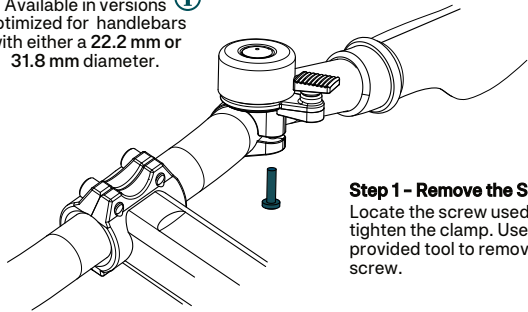
Step 7 - Link it to your Apple ID:

You will be asked to link your FindBell to your Apple ID. After tapping "Continue", your FindBell will be ready for use.



Install the FindBell

Available in versions  optimized for handlebars with either a 22.2 mm or 31.8 mm diameter.



Step 1 - Remove the Screw:

Locate the screw used to tighten the clamp. Use the provided tool to remove the screw.

Step 2 - Position and secure the Bell:

Identify a convenient and accessible spot on your bike's handlebar for the FindBell. Spread the clamp wide enough to fit over the handlebar. Now slide it into place and fasten the screw.

Step 3 - Position the Striker:

To maximize accessibility you can rotate the striker 360° and it will snap to one of the 12 preset positions.

Function Introduction

Here's what you can do with your FindBell:

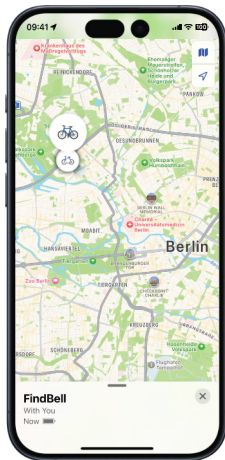
Locate FindBell

Show FindBell's Location on the Map:

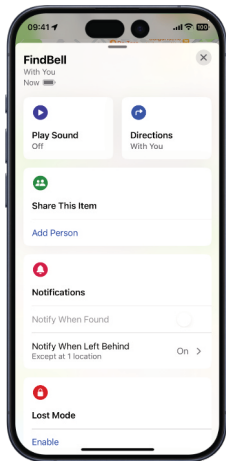
The app will display the last known location of your FindBell on a map, marked with your chosen emoji. Use the "Directions" feature to navigate to its location.

Identify FindBell:

Use the "Play Sound" feature in the Find My app to make your FindBell play a sound when it's nearby.



Locate FindBell when out of Range



Notify When Left Behind:

Activate this mode to receive notifications when you move out of range from your FindBell, alerting you if it's left behind. You can create exceptions for locations (such as your home) where you will not receive an alert if your FindBell is left behind.

Notify When Found:

If another Find My enabled device detects your FindBell, you'll get a notification on the updated location.

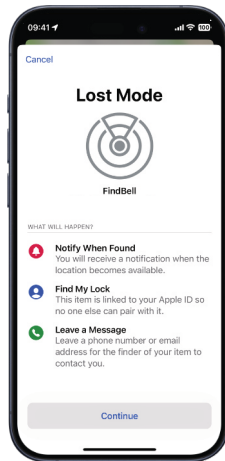
Note: This can only be activated when your FindBell is out of your device's range.

The Lost Mode

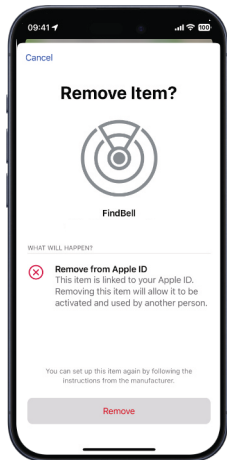
Lost Mode:

If you lose your FindBell, go to the Find My app and activate its Lost Mode. You'll be prompted to enter a phone number for direct contact. Leave a message for the finder with any additional instructions. The finder can identify your FindBell via their phone when they are nearby.

When Lost Mode is activated, the "Notify When Found" feature turns on automatically.



Remove or Reset FindBell



Remove your FindBell:

First, ensure Lost Mode is off. Then, in the Find My app, select "Remove Item" and confirm by tapping "Remove".

(Choose this option when you are in reach and want to transfer your FindBell to someone with a different Apple ID.

Reset your FindBell:

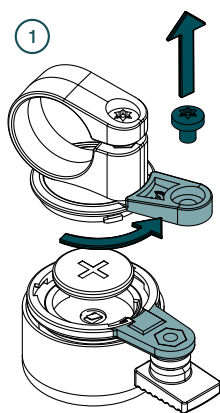
1. Open the FindBell and remove the battery.
2. Reinsert the battery and wait for the boot sound.
3. Repeat this process four more times (total of five power cycles).

After the fifth power cycle, your FindBell is reset and ready to pair with a new device. Don't forget to remove it from your Find My App.

(Choose this option when you encounter connectivity issues)

Replace the Battery

Under normal conditions, the battery lasts up to 1 year. Frequently playing a sound on your FindBell reduces batter life.



Step 1 - Remove Screw and open FindBell:

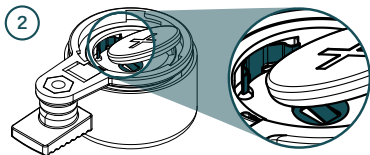
Locate the screw that holds the two halves together. Use the provided tool to remove the screw. Now gently twist the upper half counter clockwise and remove it to reveal the battery compartment.

Step 2 - Replace Battery:

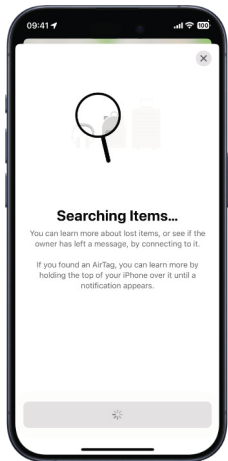
Replace it with a new CR2032 battery, with the positive side facing towards the opening. Angle the battery to **align with the side contact first**, then gently press it down to secure it in place. **Wait until it emits a boot sound.** If contact is not established successfully, realign the battery.

Step 3 - Close the Find Bell:

Now reassemble the bell by reversing Step 1.



Unwanted Tracking Detection



Automatic Notifications:

If an unknown FindBell moves with you for an extended time, your Apple device will alert you. The unknown bell will make repeated sounds to help you locate it.

Selective Alerts:

Alerts trigger only for FindBells not connected to an accompanying phone, avoiding false alarms from familiar devices.

Android Devices:

Android Users can download the "Tracker Detect" App from Apple to detect unwanted Find My Network compatible Trackers.

Information on the Apple Find My Network

The Apple Find My network provides an easy, secure way to locate compatible personal items using the Find My app on your iPhone, iPad, Mac, or the Find Items app on Apple Watch.

To use the Apple Find My app to locate this item, the latest version of iOS, iPadOS, or macOS is recommended. The Find Items app on Apple Watch requires the latest version of watchOS.

Use of the Works with Apple badge means that a product has been designed to work specifically with the technology identified in the badge and has been certified by the product manufacturer to meet Apple Find My network product specifications and requirements. Apple is not responsible for the operation of this device or use of this product or its compliance with safety and regulatory standards.

Operating under wet conditions

Your FindBell is designed with durability in mind and is certified with an IPX6 rating. This certification means that your bike bell is protected against ingress from powerful water jets for short durations under laboratory conditions.

Rain and Wet Conditions: Your FindBell is rated to withstand heavy rain, splashing, and direct sprays of water for occasional exposure.

Cleaning: When cleaning your bike, you can rinse it with water jets from a hose. However, avoid immersing the bell in water or exposing it to pressurized water jets for prolonged periods.

CE Statement and Recycling

Hereby, traag GmbH declares that this device is in compliance with the essential requirements and other relevant provisions of Directive 2014/53/EU.



The CE marking is affixed to this device, signifying compliance with the applicable EU directives and standards.

Technical Description:

Bluetooth Frequency Range: 2402 – 2480 MHz

Bluetooth Transmit Power: 4 dBm EIRP

The full text of the EU declaration of conformity is available upon request. This device has been tested and found to comply with the limits set out in the relevant EU directives. Any changes or modifications not expressly approved by traag GmbH could void the user's authority to operate this equipment.

Warnings and Guidelines: Users are advised to follow the operational instructions for proper use.



The above symbol indicates that, according to local laws and regulations, this product and its battery must be disposed of separately from household waste. To support environmental conservation and protect human health, please take your product to a designated collection point or recycling facility at the end of its service life. Doing so ensures that it will be recycled in a manner that conserves natural resources and minimizes its environmental impact. For information on recycling facilities in your area, please contact local waste management authorities. Thank you for contributing to a healthier planet by responsibly recycling your electronic products.

Scan QR Code for Installation Video and Manual in different Languages

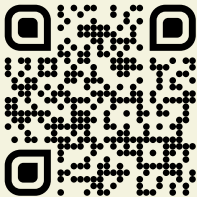
DE: Installationsvideo und Handbuch auf Deutsch.

NL: Installatievideo en handleiding in het Nederlands.

FR: Vidéo d'installation et manuel en français.

ES: Video de instalación y manual en español.

IT: Video di installazione e manuale in italiano.



For Support please contact:

✉ info@traag.de

traag GmbH
Wiesengrund 3a
23919 Behlendorf
Germany



Made in China
Designed in Berlin